

# 2010 EXECUTIVE SUMMARY OF THE MISSION HANDBOOK

## PREFACE

“In our works, our people know that we understand their suffering.” These words of St. Alberto Hurtado of Chile might as well describe the life of many missionaries working all over the world. It definitely resonates the global solidarity that has been awakened by the series of catastrophic events around the world that have claimed the lives of thousands of people, displaced millions, and left millions more to carry the burden of the memory of the tragedies as they rebuild their lives and livelihood. In the midst of all these are thousands of missionaries from all over the world who continue to accompany the people in their journey despite themselves being affected by the same disaster as the people they serve. We honor them and their commitment. We continue to pray for them and the people they serve. While this survey only presents US Catholic missionaries, they are mirrors to thousands more from all over the world who have heard and responded to the call to participate in God’s mission.

This year, we celebrate Mission Congress 2010 in the United States with the theme “God’s Mission, Many Faces: A Portrait of U.S. Catholics in Mission.” This is a joint collaboration among eight national mission agencies in the country collectively known as Catholic Mission Forum. The USCMA acts as its convener. Mission Congress in the U.S. is held every five years. This year also marks the centennial of the World Missionary Conference held in Edinburgh, Scotland, recognized as the parent of contemporary ecumenical and world missionary movement.

We are happy to share with you the compilation of the missionary survey results we received in response to a questionnaire and a request to update the 2006-2007 statistics. We mailed the survey to 606 mission-sending organizations in February, 2009. Respondents numbered 273, non-respondents 333.

The tabulation is inclusive of **U.S. citizens, Catholic missionaries only** – lay, religious and clergy – serving in mission **both within and outside** the United States borders. Acknowledging that there are hundreds of thousands of short-term missionaries (less than a year), the survey only includes missionaries who are **in mission for a minimum of one year**.

## GUIDELINES FOR SURVEY OF U.S. CATHOLIC (CROSS-CULTURAL) MISSIONERS SERVING IN THE U.S.

*[Note: The following guidelines were included with the request to mission-sending organizations that they name constituencies involved in cross-cultural mission in the U.S.]*

The following guidelines are intended to be descriptive, not theological or sociological definitions. We offer them as guidelines for pastoral/missional judgment and not as definitive statements or categories. A cross-cultural missionary may fall into one or many of these descriptions. We at the USCMA realize that these “guidelines” are not exhaustive, but they will help you in “self-defining” those missionary activities in which your organization is engaged.

1. The ministry is with people who have either never heard the Word or had it effectively proclaimed to them or their community i.e., **generally not reachable by the common methods or means of ministry in the U.S.**
2. The missionary is working in an area where the **local church** is easily understood as **institutionally underdeveloped** i.e., it lacks indigenous ecclesial leadership, personnel, and financial resources for effective ministry beyond the pastoral nurture of its own membership.

3. The ministry is genuinely with those on the margins i.e., **among people linguistically, culturally, and/or economically outside** the stream of the dominant culture.
4. The people with whom this ministry is exercised would see themselves as significantly distinct from the mainline culture i.e., **their distinct identity is clearly perceived by themselves when in the larger cultural context of the United States.**
5. It is a ministry of dialogue by which the Christian churches or community is engaged with a **community of values different from its own in some core religious or moral manner.**

## GUIDELINES TO THE PRESENTATION

The following 2008 – 2009 tabulation has been compiled by the USCMA from data received from mission-sending organizations and home dioceses (with additional reference to the *Official Catholic Directory*). The data is as reliable as the most diligent effort can make it and as current as the constant changes in personnel will allow.

The lists of data include only U.S. missionaries, meaning those who are or have been United States citizens by birth or naturalization. Those who have taken out citizenship in their country of mission service are still listed here as missionaries from the United States. On the other hand, citizens of other countries serving as members of mission-sending organizations headquartered in the U.S. are not listed. As an example, there are numerous Maryknoll sisters serving abroad, often in countries other than their homeland, who are not U.S. citizens and therefore are not listed here among the Maryknoll sisters serving abroad as U.S. Catholic missionaries. This policy helps to prevent overlapping when the various national mission councils publish their tabulations. It must be remembered, however, that mission-sending organizations which appear to have only very few members in a given mission field may have many more who are not U.S. citizens.

The lists bear the heading **U.S. Catholic Missioners**. This includes all those Catholics who are sponsored by Catholic mission-sending organizations, even if they work for projects not sponsored by the Catholic Church.

As with the 2004 – 2005 tabulation, the many missionaries ministering in cross-cultural situations in the United States are included. The continuing political and socio-economic changes, trends and circumstances – both in the U.S. and abroad – have enabled a renewed understanding of mission universally.

### TERMS:

**MISSIONER** is used in its generally accepted sense. It includes not only those engaged in the primary and subsequent stages of evangelization but also those ministering in closely related areas of community service and development.

**SERVING** stands for service over a period of time. While some organizations provide opportunities for short-term service, only those individuals are included in these statistics who serve for a minimum of one year.

**ABROAD** means “outside” of the 50 contiguous United States. Those working in Alaska and Hawaii are included in the data as missionaries serving within the U.S. As Puerto Rico and the Virgin Islands are U.S. territories and not U.S. states, their data lies in the category of “abroad” for the statistical purposes of this inventory.

## U.S. Missioners by Church Role: 1960-2009

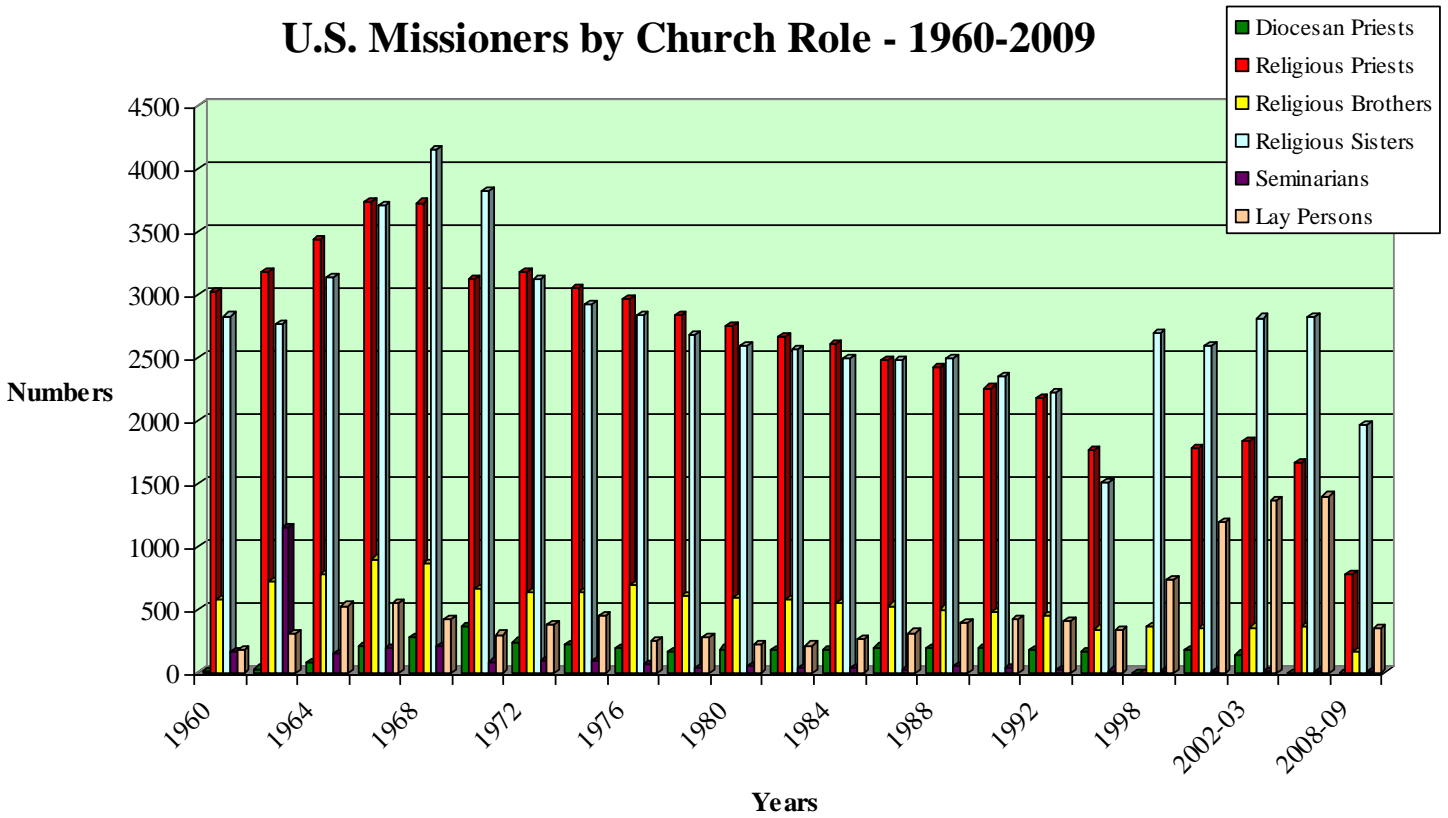
Years	Diocesan Priests	Religious Priests	Religious Brothers	Religious Sisters	Seminar-ians	Lay Persons	Totals
1960	14	3018	578	2827	170	178	6785
1962	31	3172	720	2764	1152	307	8146
1964	80	3438	782	3137	157	532	8126
1966	215	3731	901	3706	201	549	9303
1968	282	3727	869	4150	208	419	9655
1970	373	3117	666	3824	90	303	8373
1972	246	3182	634	3121	97	376	7656
1974	220	3048	639	2916	101	458	7382
1976	193	2961	691	2840	68	257	7010
1978	166	2830	610	2673	43	279	6601
1980	188	2750	592	2592	50	221	6393
1982	178	2668	578	2560	44	217	6245
1984	187	2603	549	2492	40	263	6134
1986	204	2473	532	2481	30	317	6037
1988	200	2420	504	2495	50	394	6063
1990	200	2257	477	2347	42	421	5744
1992	181	2183	449	2222	26	406	5467
1996	173	1770	347	1513	18	343	***4164
1998	• 167	• 1903	370	2693	11	739	°5883
2000-01	180	1784	349	2589	15	1191	°6108
2002-03	147	1840	361	2812	8	1368	6536
2004-05	• 136	1663	366	2819	9	1402	6395
2008-09	°68	784	171	1962	9	358	3352

\*\*\* Alaska and Hawaii are no longer in the category of overseas missioners

° These numbers include Bishops and Deacons

• These numbers includes missioners serving within and outside the U.S. Borders  
In Cross-Cultural Mission

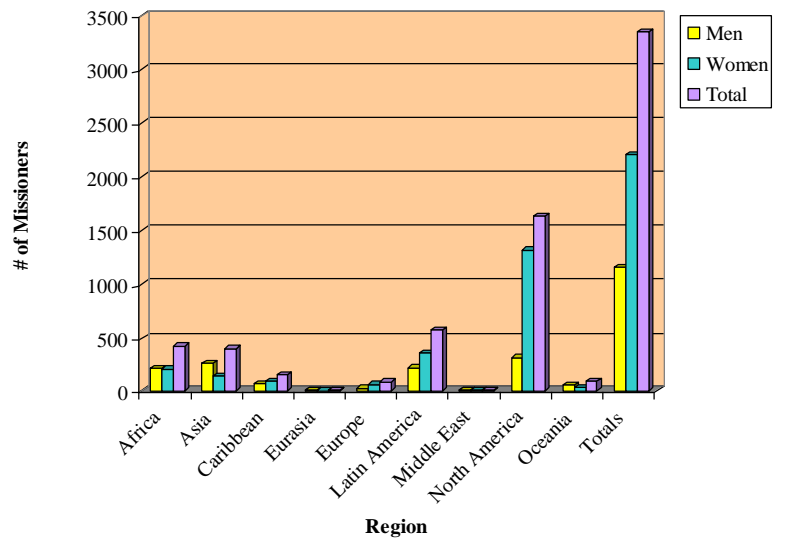
### U.S. Missioners by Church Role - 1960-2009



### U.S. Catholic Missioners by Region and Gender 2008 - 2009

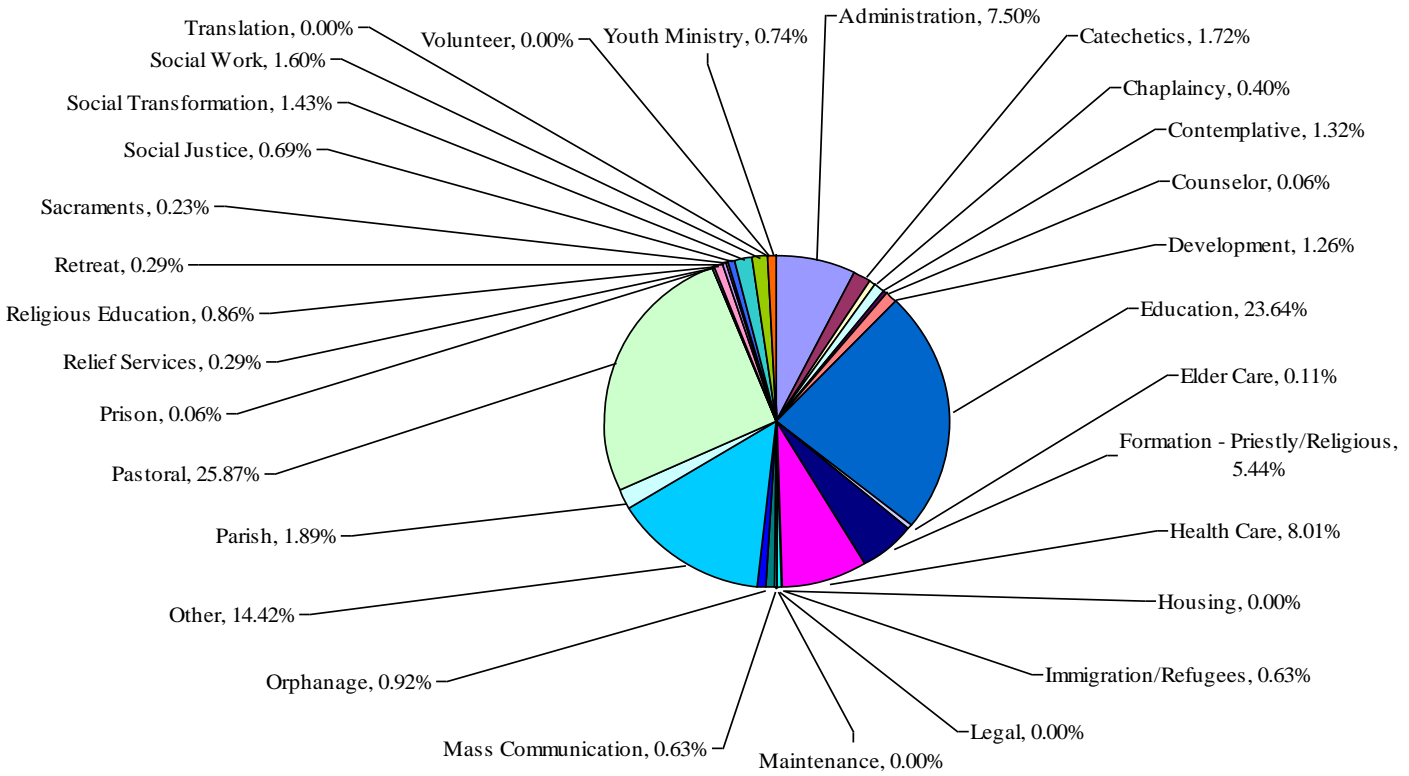
	Men	Women	Total
Africa	213	205	418
Asia	254	141	395
Caribbean	63	91	154
Eurasia	5	1	6
Europe	25	60	85
Latin America	215	352	567
Middle East	7	4	11
North America	313	1316	1629
Oceania	56	31	87
<b>Totals</b>	<b>1151</b>	<b>2201</b>	<b>3352</b>

### U.S. Catholic Missioners by Region and Gender - 2008-2009

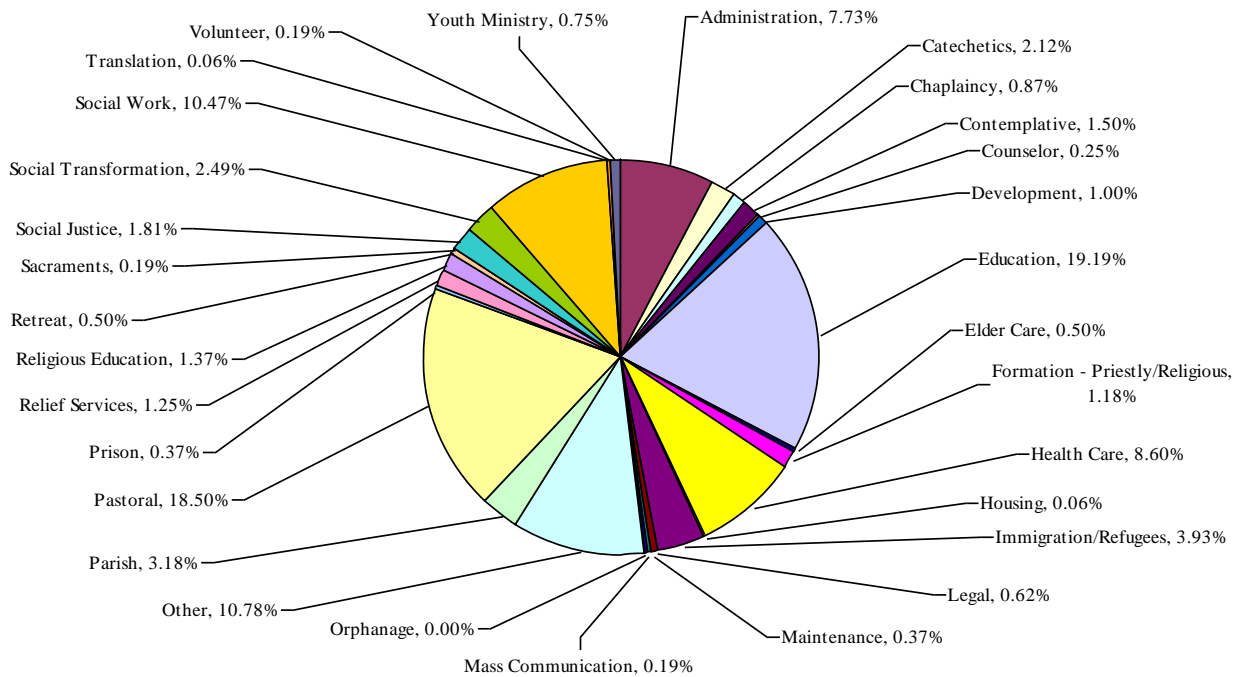


<b>Ministry Type Counts - 2008-2009</b>				
Ministry Type	World		Cross-Cultural	
	Responses	Percentage	Responses	Percentage
Administration	255	7.61	124	7.73
Catechetics	64	1.91	34	2.12
Chaplaincy	21	0.63	14	0.87
Contemplative	47	1.40	24	1.50
Counselor	5	0.15	4	0.25
Development	38	1.13	16	1.00
Education	721	21.51	308	19.19
Elder Care	10	0.30	8	0.50
Formation - Priestly/Religious	114	3.40	19	1.18
Health Care	278	8.29	138	8.60
Housing	1	0.03	1	0.06
Immigrations/Refugees	74	2.21	63	3.93
Legal	10	0.30	10	0.62
Maintenance	6	0.18	6	0.37
Mass Communication	14	0.42	3	0.19
Orphanage	16	0.48	0	0.00
Other	425	12.68	173	10.78
Parish	84	2.51	51	3.18
Pastoral	749	22.34	297	18.50
Prison	7	0.21	6	0.37
Relief Services	25	0.75	20	1.25
Religious Education	37	1.10	22	1.37
Retreat	13	0.39	8	0.50
Sacraments	7	0.21	3	0.19
Social Justice	41	1.22	29	1.81
Social Transformation	65	1.94	40	2.49
Social Work	196	5.85	168	10.47
Translation (Official)	1	0.03	1	0.06
Volunteer	3	0.09	3	0.19
Youth Ministry	25	0.75	12	0.75
<b>Totals</b>	<b>3,352</b>	<b>100</b>	<b>1,605</b>	<b>100</b>

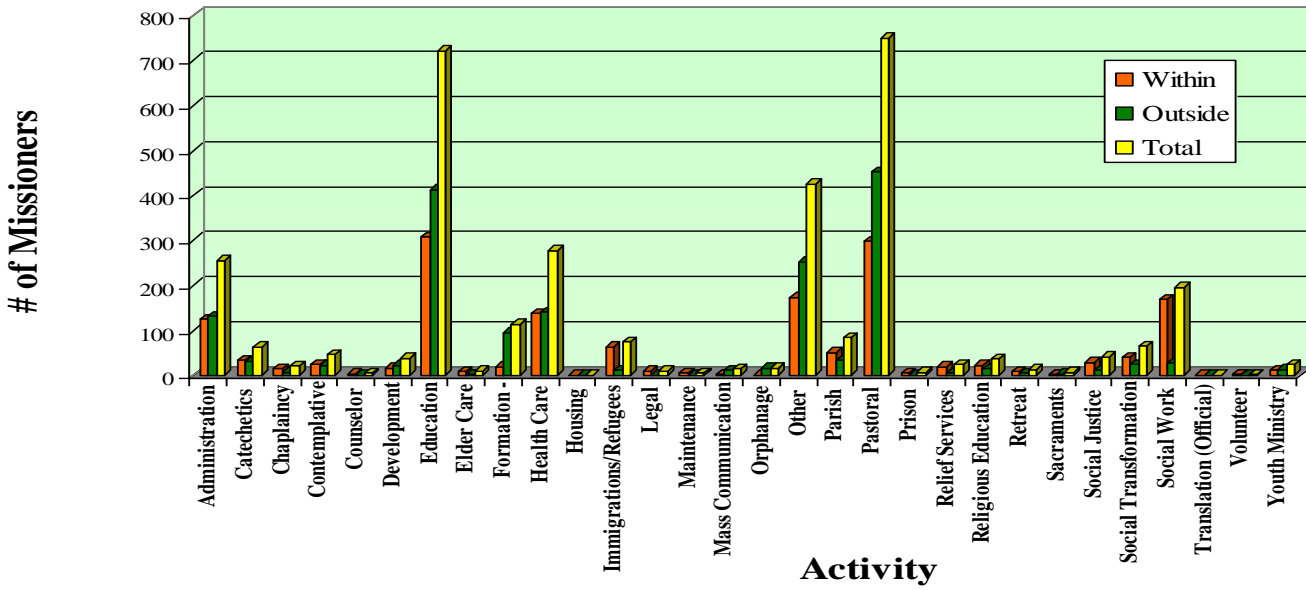
## Primary Ministry Outside U.S. Borders



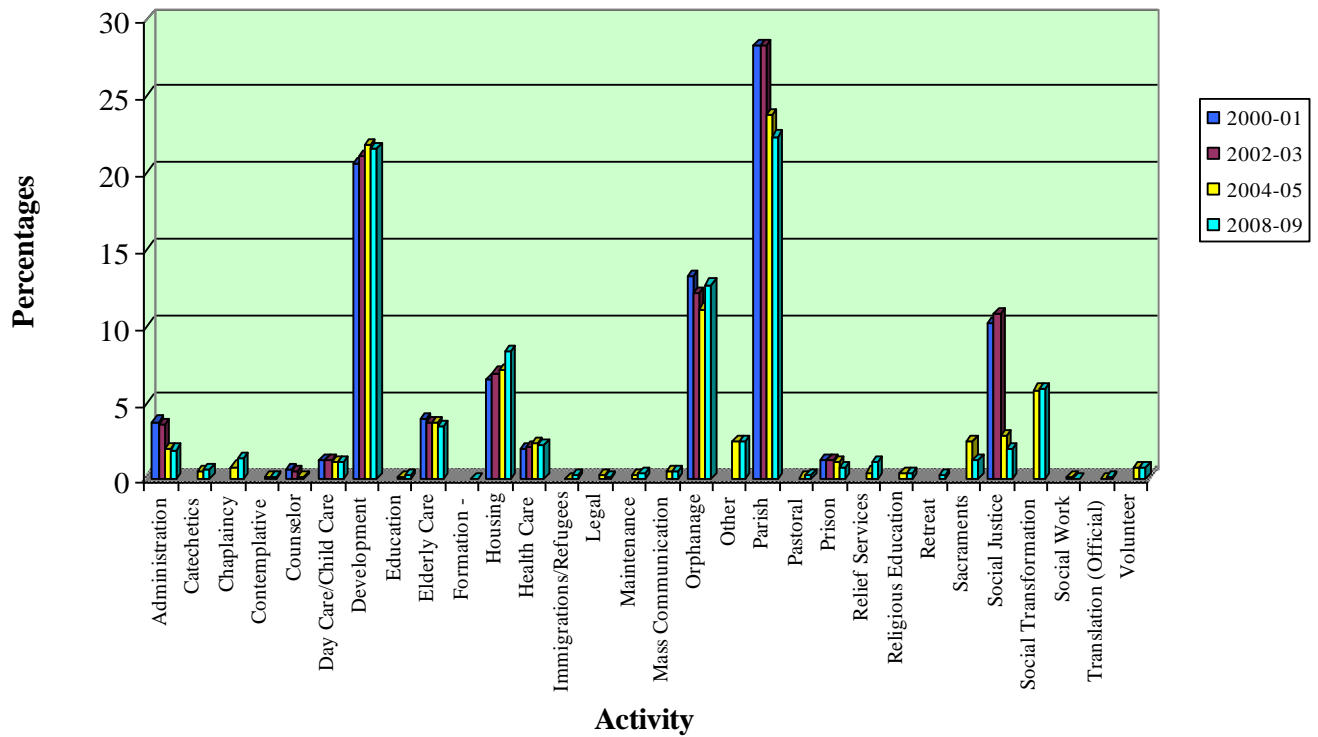
## Primary Ministry Within U.S. Borders



### Primary Ministry - Within/Outside U.S. 2008-2009



### Missionary Activity Comparison - All Missioners - 2000-01, 2002-03, 2004-05, 2008-09



<b>Missionary Ministry Comparison</b>					
<b>All Missioners</b>					
<b>2000-01,2002-03,2004-05, 2008-09</b>					
Category	Percentages	2000-01	2002-03	2004-05	2008-09
Administration		7.83	7.71	7.74	7.61
Catechetics		3.75	3.58	2.02	1.91
Chaplaincy				0.53	0.63
Contemplative				0.81	1.40
Counselor				0.09	0.15
Day Care/Child Care		0.59	0.46	0.13	
Development		1.29	1.27	1.16	1.13
Education		20.55	21.1	21.81	21.51
Elderly Care				0.14	0.30
Formation - Priestly/Rel.		3.9	3.69	3.69	3.40
Housing					0.03
Health Care		6.45	6.93	7.11	8.29
Immigrations/Refugees		1.98	2.14	2.31	2.21
Legal				0.06	0.30
Maintenance				0.28	0.18
Mass Communication				0.28	0.42
Orphanage				0.53	0.48
Other		13.18	12.13	11.09	12.68
Parish				2.44	2.51
Pastoral		28.31	28.27	23.74	22.34
Prison				0.08	0.21
Relief Services		1.2	1.21	1.08	0.75
Religious Education				0.44	1.10
Retreat				0.42	0.39
Sacraments					0.21
Social Justice				2.49	1.22
Social Transformation		10.13	10.74	2.86	1.94
Social Work				5.83	5.85
Translation (Official)				0.09	0.03
Volunteer				0.02	0.09
Youth Ministry				0.72	0.75

### U.S. CATHOLIC AGE DISTRIBUTION BY CHURCH ROLE

Age Group	(Arch)Bishop	Deacon	Dio Priest	Lay Person	Rel Bro	Rel Priest	Rel Sister	Seminarian	TOTAL
<21	0		0	2	0	0	0	0	2
21-29	0	1	0	243	0	1	8	2	255
30-39	0		5	26	3	10	39	5	88
40-49	0		12	11	6	42	91	1	163
50-59	1		4	14	24	109	214	1	367
60-69	3	2	7	33	63	204	635	0	947
70-79	10		7	11	50	261	683	0	1,022
80+	1		2	1	23	128	262	0	417
<b>Total Response</b>	<b>15</b>	<b>3</b>	<b>37</b>	<b>341</b>	<b>169</b>	<b>755</b>	<b>1,932</b>	<b>9</b>	<b>3,261</b>
<b>No Answer</b>	<b>1</b>	<b>0</b>	<b>12</b>	<b>16</b>	<b>2</b>	<b>29</b>	<b>31</b>	<b>0</b>	<b>91</b>
<b>Grand Total</b>	<b>16</b>	<b>3</b>	<b>49</b>	<b>357</b>	<b>171</b>	<b>784</b>	<b>1,963</b>	<b>9</b>	<b>3,352</b>
<b>Average Age</b>	<b>71.2</b>	<b>53.7</b>	<b>55.6</b>	<b>32.2</b>	<b>71.9</b>	<b>68.5</b>	<b>68.5</b>	<b>37</b>	<b>64.6</b>

### AGE DISTRIBUTION BY CHURCH ROLE - 2008-2009

